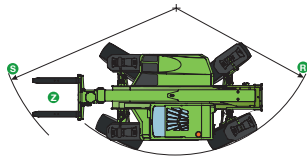
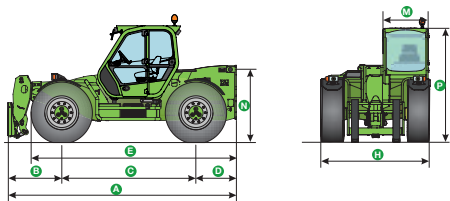




- ✓ The suspended cab is unique, patented and the largest in its category
- ✓ Level II ROPS and FOPS cab compliant
- ✓ M CDC Dynamic Load Control
- ✓ Tilting system
- ✓ BSS boom suspension (optional)
- ✓ Standard Tac-Lock
- ✓ -18% consumption with EPD - Eco Power Drive
- ✓ 156 HP Tier 4 Interim engine and Fan Drive as standard
- ✓ Load Sensing hydraulic pump and Flow-Sharing distributor
- ✓ Electronic Joystick with auto-accelerating function as standard

PANORAMIC CS



DIMENSIONS	PANORAMIC CS
A (mm)	5120
B (mm)	1210
C (mm)	3000
D (mm)	910
E (mm)	4600
F (mm)	480
H (mm)	2420
M (mm)	1010
N (mm)	1620
P (mm)	2440 min - 2500 med
R (mm)	4420
S (mm)	5100
Z (mm)	850

Even more innovative and high-performing

New technologies for new fields of application

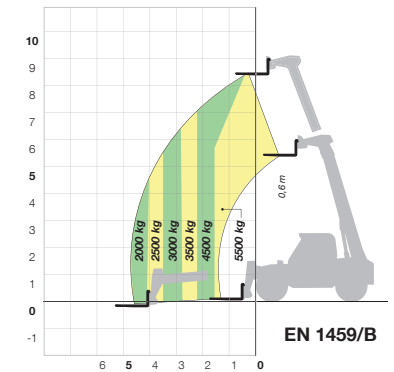
Panoramic CS machines were the first Merlo telehandlers to be fitted with suspended cabs as standard with in order to ensure high comfort levels - an achievement still unequalled by the competition.

The CS range belongs to the 9 m class and offer three models - P55.9 CS, P60.9 CS, P75.9 CS. Load capacities from 5.5 to 7.5 tonnes.

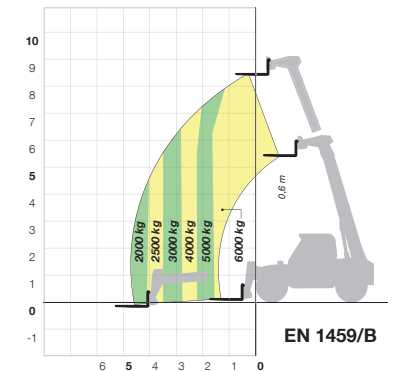
TECHNICAL INFORMATION	P 55.9 CS	P 60.9 CS	P 75.9 CS
Total unladen mass, without forks (kg)	10320	10940	11400
Maximum capacity (kg)	5500	6000	7500
Lifting height (m)	8,6	8,6	8,6
Tier 4 Interim engine power (kW/CV)	115/156	115/156	115/156
Maximum speed (km/h)	40	40	40
Hydraulic Load-Sensing pump (bar-l/min)	240/176	240/176	240/176
Flow Sharing Distributor	●	●	●
Gearbox	2 speeds	2 speeds	2 speeds
"CS" Suspended cab	●	●	●
Chassis with levelling	●	●	●
EPD Eco Power Drive	●	●	●
BSS hydro-pneumatic boom suspension	●	●	●
Electronic joystick with automatic accelerator	●	●	●
M CDC Dynamic Load Control	●	●	●
Dual Control Reverse Shuttle (joystick/steering wheel)	●	●	●

● As standard. ○ On request.

P 55.9 CS WITH FORKS



P 60.9 CS WITH FORKS



P 75.9 CS WITH FORKS

